



MONTHLY MEMBERSHIP PROGRESS REPORT

District 3233E2

Results as of: 05/31/2019

GMT: ANIL TULSYAN

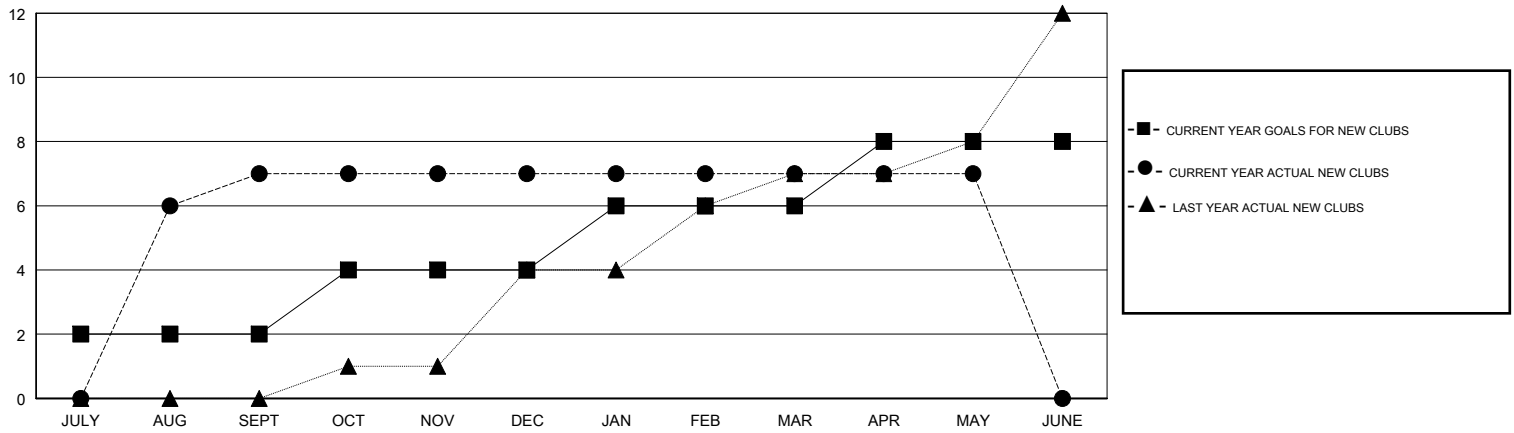
LOCATION INDIA

GMT CA

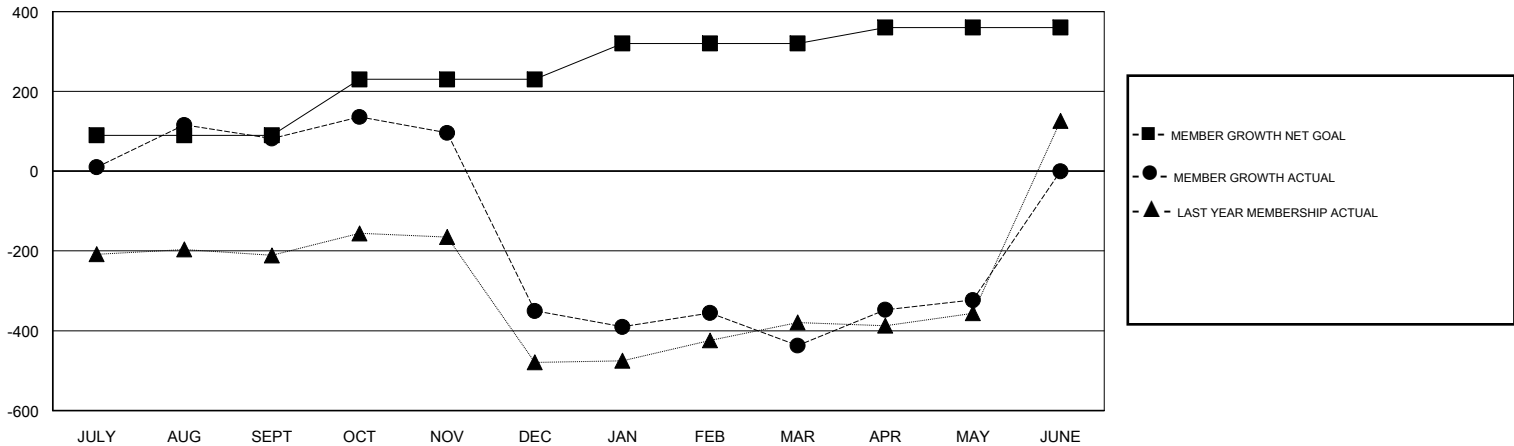
Clubs			
RESULTS FOR 2018-2019			
QUARTER	NEW CLUB GOAL	NEW CLUBS	DROPPED CLUBS
JULY/AUG/SEPT	2	7	2
OCT/NOV/DEC	2	0	13
JAN/FEB/MAR	2	0	6
APR/MAY/JUNE	2	0	0

Members			
RESULTS FOR 2018-2019			
QUARTER	MEMBER GROWTH NET GOAL	MEMBER GROWTH ACTUAL	DROPPED MEMBERS ACTUAL (including transfers)
JULY/AUG/SEPT	90	259	161
OCT/NOV/DEC	140	99	525
JAN/FEB/MAR	90	371	215
APR/MAY/JUNE	40	204	63

GOALS AND ACTUAL NEW CLUBS CUMULATIVE



GOALS AND ACTUAL MEMBERS CUMULATIVE



DROPPED CLUBS: 21	90 CLUBS OF 153 ADDED 1 OR MORE NEW MEMBERS	<u>GENDER DISTRIBUTION</u> MALE 4,589 (74.56%) FEMALE 1,566 (25.44%) Women Percentage Fiscal Year Goal: 22%
<u>DROPPED MEMBERS</u> DECEASED 6 CLUB CANCELLED 449 OTHER 508 TOTAL 963	CLICK HERE FOR CUMULATIVE MEMBERSHIP DATA	TOTAL FAMILY UNIT MEMBERS 2,087 FAMILY MEMBERS PAYING HALF DUES 1,098